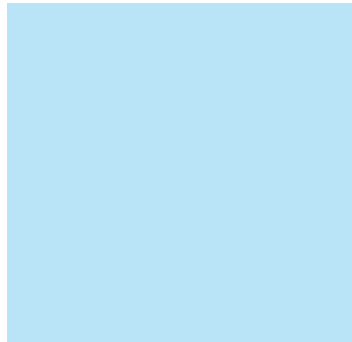
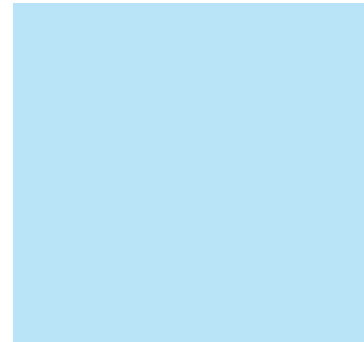


NEED HELP
GETTING
LOGGED INTO
YOUR E-PEBP
PORTAL
ACCOUNT?



NEVADA PUBLIC EMPLOYEES' BENEFITS PROGRAM

775-684-7000
or 1-800-326-5496
www.pebp.state.nv.us





Plans

Plan Information & Contacts



Resources

Forms, How-To & New Hire Information



Meetings & Events

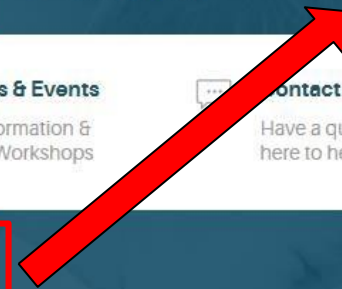
Board Information & Member Workshops



Contact Us

Have a question? We're here to help.

Click Login to get to the E-PEBP Portal



Explore Your Benefits

Access information about your benefits and view documents related to your plan.



Find a Provider

Search provider directories by plan for in-network medical and dental providers.

www.pebp.state.nv.us

What's New

Quick Tips



Welcome to Benefitplace!

Benefitplace is PEBP's E-PEBP portal where members can shop, enroll, and manage benefit information.

Note: If you are accessing Benefitplace for the first time you can "create an account" below to self-register and setup a username and password. If you have already created a username and password and need help accessing you can select "Can't access your account?".

Log in to your account

Your session timed out due to inactivity.

Username

[Forgot username](#)

Password

[Reset password](#)

[Can't access your account?](#)
[Create an account](#)

Supported Browsers

[Learn about Officially Supported Browsers](#)



Forgot Your Username?



1. Click on *Forgot username*
2. Gain access by providing what type of Benefitplace user you are
3. Provide your identifying information
4. Select your verification method
5. View your username and update your password

2. Account access

Please start by telling us which type of Benefitplace user you are.

- Employee or Independent Worker
- Employer or HR Administrator

[Forgot your password?](#)

Next

Cancel

3. [Forgot your username?](#)

Provide your identifying information

Last Name

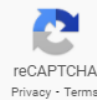
Date of Birth (mm/dd/yyyy)



Last four digits of Social Security Number

Security check

I'm not a robot



Next

Cancel

4. [Reset your login](#)

Select your verification method

- Answer secret questions
- Send a passcode to the email address on file
- Send a passcode via text to the mobile number on file

Next

Cancel

5. [Reset your password](#)

Update your Password

Your username is:

Enter and confirm your new password below.

New Password *

Confirm New Password *

Save

Cancel

Forgot Password?



1. Click on *Reset password*
2. Provide your identifying information
3. Select your verification method
4. Follow the prompts to reset your password

Reset your password

Provide your identifying information

Username

[Forgot your username?](#)

Security check

I'm not a robot



Next

Cancel

Your password must contain:

- between 8-15 characters
- at least 1 number
- at least 1 upper and 1 lower case letter

Password cannot contain:

- more than two identical characters in a row
- Username or SSN
- You cannot reuse the last 8 passwords.

Reset your password

Select your verification method

- Answer secret questions
- Send a passcode to the email address on file
- Send a passcode via text to the mobile number on file

Next

Cancel



You Can Also...

Click on the *Can't access your account?* and follow the prompts to gain access

Account access

Please select which option you need help with - please note, you will need your username to reset your password.

- I can't remember my password
- I forgot my username

Next

Cancel

Are you a new user? Create your Account

1. Click on *Create an account* to set up a new E-PEBP Portal account
2. Provide your identifying information and follow the prompts to set up your account
3. Select and provide answers to your security questions
4. Set your password

Create your account

Provide your identifying information

Last Name

Date of Birth (mm/dd/yyyy)



Last four digits of Social Security Number

Security check

I'm not a robot



Next

Cancel

Your password must contain:

- between 8-15 characters
- at least 1 number
- at least 1 upper and 1 lower case letter

Password cannot contain:

- more than two identical characters in a row
- Username or SSN
- You cannot reuse the last 8 passwords.